



Parent Emergency Procedures

Compass students will have participated in a drill for each of these emergent situations. Here is what parents need to know in case of fire, severe weather, or other evacuation.

Severe Weather: In the event of a severe weather situation, we will monitor news stations and emergency channels as well as Moore Public Schools. We will use our best judgment and definitely stay in conjunction with Moore Public Schools in deciding when and if to move students to shelter and dismiss early. Compass Director will notify parents via email and Remind as soon as classes begin to move to their safe place. At that point, our schoolday will be considered complete, and parents/caregivers will be asked to check out students as soon as possible within one hour of notification.

Teachers and Students will move from building B to building A, and shelter in assigned rooms. Administrators and Church Staff will be stationed at the covered entrance (labeled 1 on the map) and read student names from car signs via walkie talkies.

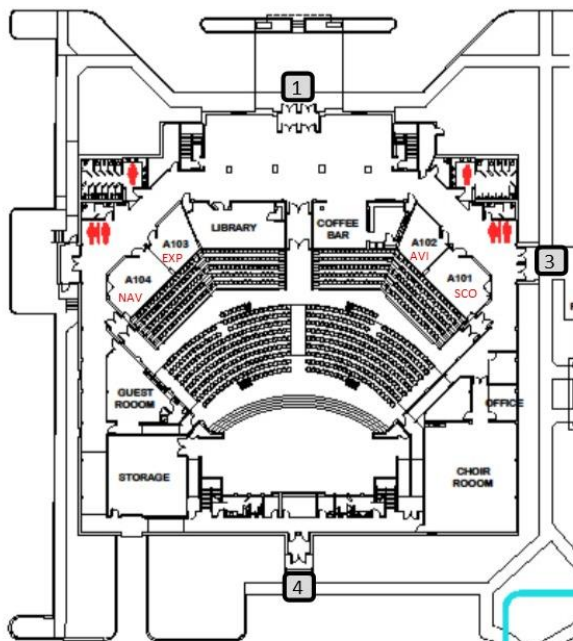
Please plan to enter the covered area from the North and place your child's name sign where it will be visible from the front. Teachers will mark attendance sheets when students' names are called, and students will be escorted to the door and loaded into cars. Please refrain from exiting your vehicle during this process as this will slow down the line. We will do everything we can to get your students loaded quickly.

Fire/Other evacuation: In the event of a fire in the building, or other incidents requiring evacuation, students will follow their evacuation routes out to the Emmaus playground to the Southwest of the Compass building. Since the Emmaus parking lot is likely to be blocked by emergency vehicles, Parents will enter the Oklahoma Baptist Homes for Children entrance, once street south of the Emmaus campus. Upon entering the OBHC, take the first right and follow the road around until you see the playground on the right. (You will see your kids and their teachers too.) **Car signs will be used in this procedure.** We will load students into cars, and you will not need to exit your vehicle. The road circles back out for easy exit.

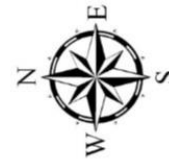
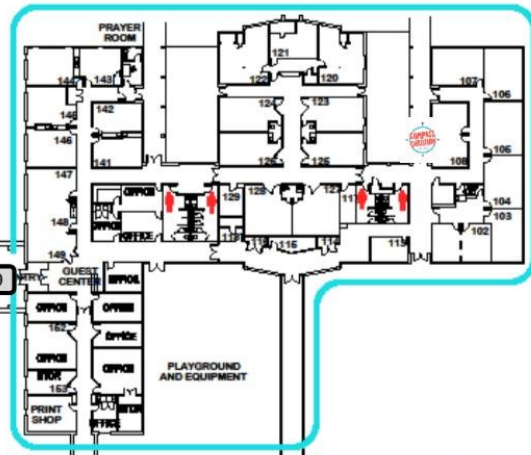


SEVERE WEATHER
PICKUP

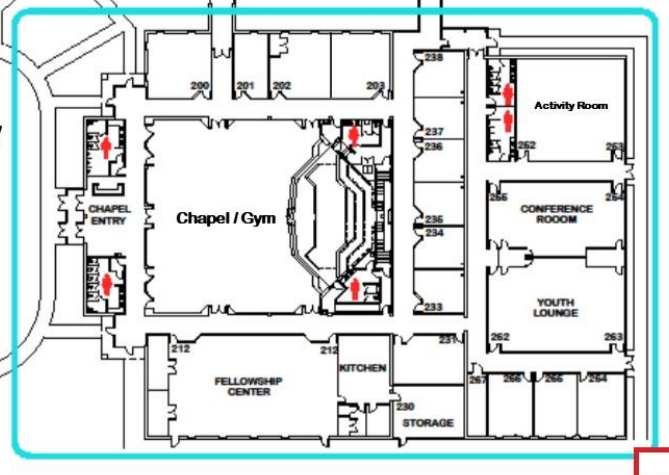
"A" Building



"B" Building



"C" Building



**FIRE MEETING
PLACE**